



## 1994 Moody 38

Leros, Greece

YEAR	LENGTH	BUILDER/MANUFACTURER	PRICE
1994	38 ft / 11.58 m	Marine Projects Ltd. (UK)	€88,000

Discover the perfect blend of adventure, comfort, and reliability with our Moody 38, meticulously maintained and ready to sail. Designed by Bill Dixon and built to the high standards of Moody Yachts, this vessel offers the ideal setting for those transitioning into a life at sea. Whether you're a tech-savvy couple seeking a floating office and home, a semi-retired professional craving tranquility and solitude, or an adventurous family on a sabbatical year, the Moody 38 caters to your every need without compromise. With its modern electrics, ample living spaces, and robust safety features, it stands as a testament to quality and thoughtful design.

A Vessel for All Seasons and Reasons: Equipped with solar panels, efficient energy storage, and a Volvo Penta diesel engine known for its reliability, this yacht ensures that your adventures are both eco-friendly and enjoyable. The spacious layout, including a centre cockpit, large aft cabin, and a versatile galley, makes it suitable for both solo voyages and memorable family moments. It's a boat that understands the importance of being a comfortable, secure home away from home, with every detail crafted to enhance your time on the water.

Whether it's exploring the vibrant cultures of the Mediterranean, embarking on a digital nomad lifestyle across the seas, or teaching your children the wonders of marine life, this yacht promises to be your reliable companion. Priced sensibly to reflect its value and capabilities.

# SPECIFICATIONS

Year Built	1994	Category	Sail	Length Overall	37'6 ft / 11.43 m
Beam	12'8 ft / 3.86 m	Max Draft	4'6 ft / 1.37 m	Construction	Fiberglass
Keel	Bulb Keel	Drive Type	Direct	Engines	1
Total Engine Power	50 hp	Ballast	3114 kg	Displacement	8,182 kg
Tax Status	Paid				

# ENGINE 1 SPECIFICATIONS

Make:	Volvo Penta	Model:	MD22L-A	Fuel:	Diesel
Engine Power:	50hp	Type:	Inboard	Propeller Type:	3 Blade
Drive Type:	Direct	Year:	1994	Engine Hours:	3,020

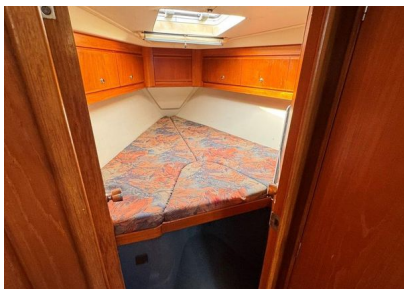
# MEDIA GALLERY



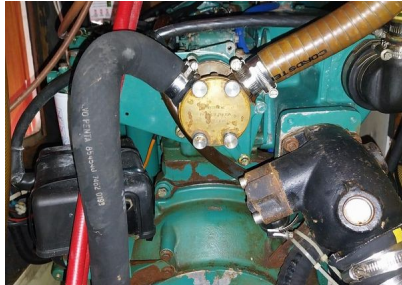
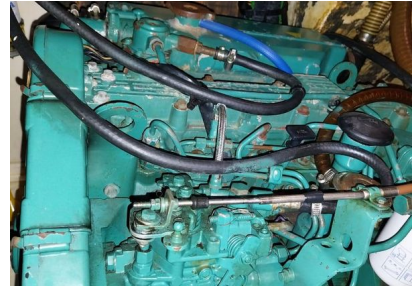












### **Construction**

White GRP hull  
 White, non-slip integrated, GRP deck  
 White, centre cockpit, GRP superstructure  
 Iron shoal keel with bulb  
 Partial skeg hung rudder  
 Wheel steering

2023 – Underwater profile stripped back to GRP and Iron, 4 coats of International Primocon undercoat applied followed by International Micron 300 Antifoul. Single coat of International Micron 350 applied April 2024

### **Machinery**

Volvo Penta MD22L-A diesel engine (original)  
 3020 recorded hours (March 2024)  
 Shaft drive to fixed 3-blade propellor  
 Engine exhaust elbow replaced January 2020  
 Assorted hand tools  
 Assorted electrical tools

Spares include:

Alternator  
 Volvo heat exchange elbow  
 Volvo freshwater pump  
 sea water pump seal  
 Volvo 40/60 coolant (>12L)  
 belts, impellers, fuel filters, oil filters, thermostat and many more

#### Service and Maintenance:

In the last four years the engine/gearbox has had regular service. Oil changes approximately every 100hrs. Engine filters, belt, impellor every second service. Sea water cooling system flushed/soaked every year. Fresh water cooling system flushed and replaced with new Volvo Penta 60/40 coolant every 2 years.

#### Electrics

12v, 48v and 220v onboard circuits  
2 x Victron Li-Ion 200ah domestic batteries Feb 2021  
Victron sealed lead 130ah domestic battery Feb 2021  
Nord sealed lead 115ah engine start battery Feb 2020  
2 x 215W Solar panels Feb 2021  
2 x 50W Solar panels  
2 x 48v Victron MPPT controllers Feb 2021  
12v Victron MPPT control Feb 2021  
2 x DC-DC 48v -12v Converters Feb 2021  
Sterling alternator controller  
Victron Multiplus 48v 5kva inverter/charger Feb 2021  
Programming interface for Multiplus inverter/charger Feb 2021  
Victron Energy VE.Bus BMS Feb 2021  
Victron Color Control GX Feb 2021  
Cabling, breaker boxes, bus bars and fuses replaced Feb 2021  
Shore power with 3 x >20m cables with adaptors  
Stirling Pro Save C galvanic isolator on shore power

#### Spares include:

Victron Charge controller for setting battery type on Phoenix  
Victron Programming interface for Multiplus Inverter Charger  
Quick 1 Windlass solenoid T503 12v 1500W  
Quick 1 Windlass handheld control  
Cable, wiring, plugs, sockets, relays, fuses, breakers, connectors

#### Tankage

227ltrs Steel diesel tank  
27ltrs Diesel fuel container  
2 x Aluminium water tanks 405ltrs total capacity  
86ltrs Tektanks high-density polyethylene holding tank

#### Rig and Sails

Sloop rigged  
Aluminium, Kemp mast, boom and spinnaker pole  
Stainless steel wire standing rigging 2007

#### Winches

2 x Lewmar ST44 primary winches  
2 x Lewmar ST30 halyard winches  
Lewmar 24 halyard winch  
Lewmar ST16 main winch  
Lewmar 8 genoa furler winch

#### Sails

White, Lucas in-mast furling mainsail 2007  
White, Kemp roller-furling genoa 2009  
UV Protective strip replaced November 2023  
White heavy weather roller-furling genoa  
Multi-coloured cruising chute with snuffer

#### Accommodation

Sleeps 5 in 3 cabins plus 2 in saloon  
Forward double V-berth cabin  
Forward heads with W/C connected to holding tank and shower

Pipework replaced August 2022  
Walkthrough saloon with U-shaped seating to starboard  
Sofa seating to port  
2 x Saloon tables removable and can swivel  
Blue saloon upholstery  
L-shape galley to port  
Walkthrough cabin to starboard  
(Currently used for storage, no mattress)  
Aft master cabin with centreline double berth  
Aft ensuite heads with W/C (direct discharge) and shower  
Light wood interior joinery  
All lighting changed to LED  
Opening portlights and hatches with insect screens  
Four-way wind scoop  
Standard hatch wind scoop  
6'2" – 5'10" headroom  
Carpet in all cabins

Spares include:

Jabsco 1 Electric waste pump  
Jabsco 2 Twist & Lock heads pumps 29040-3000  
Jabsco Water Pump – Paar Max 3  
Jabsco head service spare parts.

**Domestic**

Spinflow Nelson gas cooker with oven grill and two hobs  
2 x Stainless steel sinks  
Frigoboat fridge re-gassed January 2024  
Vivax IM-122T Icemaker  
20ltrs Calorifer replaced 2021  
Cutlery and crockery for 8  
Instapot pressure cooker (3L)  
Various cooking utensils  
Pioneer CD/Radio  
2x Caframo 12v fans (main cabin and saloon)  
Inventor Avra dehumidifier  
Clock and Barometer set  
Digital temperature/humidity monitors (saloon and main cabin)  
Vintage oil lamp  
White board

**Deck**

Lofrans Kobra electric windlass 2011  
20kg Rocna bow anchor (2010) with 70m/8mm chain  
Chain re-galvanised February 2023  
23kg Fortress FX 23 anchor with 12m/8mm chain  
Snubber line with chain hook  
Spare snubber chain hook  
10 x Mooring warps  
70m Med mooring line (with 5m chain with carabiners)  
50m Med mooring line (with 2x2.5m chain with carbiners)  
30m Spare med mooring line  
19 x Assorted fender  
2 x Standard boathooks  
Moorfast boathook  
Aluminium Pasarelle mountable forward and aft  
Blue sprayhood  
Blue bimini  
Swim ladder on transom

Deck shower on transom (tap inside port lazarette)  
3 x Gas bottles in gas locker  
Gas Control Solenoid Valve (in gas locker)  
15m water hose and assorted hose fittings  
Two stage filter manifold for filling fresh water  
Lights - navigation lights, deck light, mast light, steaming light

Diving Equipment  
12L Steel Faber SCUBA tank with backpack  
Scuba regulator set  
Diving weight belt - for cleaning or inspection below waterline  
Regulator set serviced February 2024  
SCUBA tank last hydrostatic test June 2022

#### **Navigation**

Silva 125 pedestal compass  
Raymarine C90W Plotter  
Autohelm Tridata speed/log  
Autohelm Tridata depth sounder  
Cruiser wind indicator  
Radar Furuno colour radar  
Raymarine Ray 54E VHF  
2 x Standard Horizon HX270 handheld VHF radio  
Autohelm ST7000 autopilot  
Autohelm personal hand compass  
Digital Yacht GPS  
Raymarine Raystar 125 plus GPS sensor (spare)  
Binoculars  
Charts and pilot books for Greek waters, West Mediterranean, Turkey

Current owners rarely use installed chartplotter or radar (unplugged, mounts under the companionway, stored in the v-berth cupboard), preferring to utilise modern online apps, including Navionics, Predict Wind, Windy, Navily, Marine Traffic, and Google Maps. Nearly all passages were done in daylight hours during favourable weather conditions.

#### **Tenders**

Zodiac 2.6m C260 Airlite  
3 Piece wooden floor  
Capacity 3 Adults, one child  
Yamaha 6hp outboard (serviced 2023)  
5L tender fuel container  
11L tender fuel container  
12L external fuel tank with hose for outboard engine  
2 x paddles for tender plus 2 x spares  
Manual pump bailer for tender  
Anchor line and warp for tender  
2 x ~ 3kg dinghy anchors  
Stand up paddle board with paddle, bag and leg strap  
2 x Citizen fold-up bicycles with carry baskets, locks and lights

Spare include:  
Bilge discharge valve  
Inflation valves  
Patches and adhesive  
Spark plugs, fuel filter

#### **Safety**

Lifeguard DSB Deutsche Schlauchboot 6-person life raft  
Serviced March 2021  
5 x Manual fire extinguishers



Auto extinguisher in engine bay  
Fire blanket  
2 x Electric bilge pumps  
2 x Manual bilge pumps  
4 x Crewsaver life jackets  
4 x Jackstays (2 x cockpit to mast, 2 x mast to anchor locker)  
Grab bag  
ACR Global Fix EPIRB  
7 x Flares (Yacht)  
2 x Flares (Tender)  
Horseshoe collar lifebuoy  
Static radar reflector between spreaders  
Standard dan buoy  
Pilot gas Monitoring System (in galley)  
Gas bubble leak detector (in gas locker)  
Portable CO gas monitor (main cabin)  
2 x Manual air horns  
Man overboard rescue sling  
Throwing line  
2 x Raymarine life tag system (2 tags)  
Handheld spotlight with socket in anchor locker  
Bolt cutters  
hacksaw  
Petzl rope access harness  
ASAP fall arrest device and Edelrid rope  
Pantin ascender  
Climbing helmet  
Fire axe

The condition or level of safety equipment on board is not to be negotiated on following survey. It is likely to be listed by most surveyors but is not structural or an integral working part of the vessel and is not to be used to further negotiate the price down after survey. We strongly suggest that for your own personal safety that when purchasing a yacht you provide new safety equipment rather than relying on second hand gear.

Should you become the new owner of this yacht then the responsibility to re-register or update official bodies for items such as EPIRB, VHF, MMSI or AIS becomes yours.

#### **Disclaimer and Travelling to Inspect**

The Company offers the details of this vessel in good faith. Whilst every care has been taken in their preparation, the correctness of these particulars is not guaranteed. The particulars are intended only as a guide and they do not constitute a term of any contract. A prospective buyer is strongly advised to check the particulars and where appropriate at his own expense to employ a qualified Marine Surveyor to carry out a survey and/or to have an engine trial conducted which if conducted by us shall not imply any liability for such engine on our part. This vessel is offered subject to prior sale, price change, or withdrawal without notice.

By contacting Williams & Smithells Ltd from this yacht portal or our website direct you are agreeing to provide us with your contact details relating to your interest in purchasing a yacht. We will use these details to contact you offering suitable yachts in the future. If you no longer wish to be sent yacht details or promotional information please send an email stating you wish to opt-out and be removed.

Please contact Williams and Smithells to book an appointment to inspect any yacht before you book flights or pay for travel. This is to ensure you have a confirmed booking in our diary with the right amount of time allocated to inspect the yachts you want. Our yachts are not all in one marina, yard or harbour and in season do change locations. To avoid disappointment, call or email before you make travel plans.

#### **Additional Contact Information**

Trusted British Yacht Brokers, specialising in Cruising and Blue Water yachts. Experienced, Professional, Qualified All Brokers are Full Members of ABYA, we work to a code of practice with safe Clients bank Accounts and carry PI Insurance. Experience

our Service we sell yachts nothing else. Call us for a chat 00 44 (0)1329 827053 (tel:00 44 (0)1329 827053)

---

This Yacht is offered for sale by Williams & Smithells International Ltd

---

Williams & Smithells International Ltd Unit 3 Martins Barn, Birdham Road, Chichester, West Sussex, PO20 7BX Company Reg No 11329373 VAT No 309346208

© 2024 Boats Group