

Moody 33 MkII, 1980, Fin Keel, Centre Cockpit - Moody Waters - £28,000 (tax paid)

Essential reading for all cruising sailors

SAILING

August 2001 £3.00

TODAY

2-3.5HP OUTBOARD ENGINES
10 tested & rated
We tell you which is best

28 PAGES OF TESTS & REVIEWS!

FIRST TIME ACROSS
THE SOLENT
Good advice for first-time skippers

Wiring checks
Keep your battery ship shape

FITTING A VHF
Tips for an easy DIY installation

30-35FT CRUISERS

BUYING USED

Moody 33 tested plus five alternatives: Warrior 35, Maxi 95, Scanmar 35, Westerly 33 & Renown

GULL'S EYE: PORTSMOUTH PART 1
EXCLUSIVE PULL-OUT GUIDE INSIDE

madreport.com 9 771367 586032 AUGUST 2001 £3.00

(As featured on the front page of Sailing Today - Aug 2001)

Location: Southsea Marina

Year: 1980

Length: 33ft / 10.06m

Keel: Fin Keel

Water: 160L

Fuel: 182L

Propulsion: Shaft driven with 2 blade folding propeller

Built by: Marine Projects (Plymouth) Limited

Rig: Sloop

Draft: 4.5ft / 1.35m

Beam: 11' 5ft / 3.48m

Engine: BMC Thornycroft T90 35hp

Gearbox: TMP Hydraulic



GENERAL

- 5 coats of Hempel Gel Protect GFE 200 plus primer - 2014
- Tecsew Navy sprayhood and cockpit tent - new 2010
- 2 x Lewmar 40 self tailing winches - new 2011
- 4 x 110 Ah batteries plus 2 x battery switches - 2011
- All standing rigging replaced with new 8mm 1 x 19 stainless steel - 2014
- All rigging replaced with Sta-Lok and Navtec Norseman swageless terminals
- Eberspacher D2 Airtronic heating - 5 outlets
- Gates with pelican hooks and stainless steel stanchions - new 2006
- Forward hatch replaced with Lewmar 60 Low Profile Hatch
- Forward Hatch cover
- Lucas main sail - new 2008
- Rotostay II Furling Genoa - new forestay 2014
- Lucas Cruising Chute and snuffer - new 2001
- Storm Jib
- Proctor mast - Roller reefing
- I.Y.E. Telescopic Spinnaker Pole
- Sail cover (navy) - new 2023
- Upholstery and mattresses replaced - new 2023 (Comfort Afloat)
- Assorted Spares - Starter Motor, Pumps, Engine Spares & Boat Trim





DECK EQUIPMENT

- Full Canvas Winter Cover
- Simpson-Lawrence Hyspeed Anchor Windlass (Model 510)
- Whitlock Steering Binicle - overhauled 1999
- Plastimo Offshore 100 Compass - new 2001
- Tecsew Sprayhood & cockpit tent - new 2010
- Lucas spray dodgers
- 1 X CQR plough anchor
- 50m Calibrated Galvanized Anchor Chain
- Stemhead bow roller
- Index Marine DR1 deck gland
- Weaver Snap Davits
- Telescopic Boat Hook
- Stainless Steel folding stern boarding ladder
- 2 X Lewmar 40 self tailing Genoa sheet winches - new 2011
- 1 X Gibb 28RA furling winch
- 2 X Lewmar 7 mast halyard winches
- LED deck / steaming light - LED
- Outboard motor rail mount bracket
- 8 X Fenders
- Large assortment of mooring lines
- Gates with pelican hooks and stainless steel stanchions - new 2006
- All mast wiring completely renewed, to termination box below - 2014
- All windows overhauled with new exterior screw seal
- Full cockpit foam / vinyl fitted cushions - navy
- Rigging screw and shroud cover protectors
- Mast spreader sail protection boots



INTERIOR & ACCOMODATION

7 Berth

Forward Cabin V berth with removable in-fill- 2 berth - 1 heating outlet

Saloon - 1 double - 1 single berth - 2 heating outlet

Aft Cabin - 2 single berth - 1 heating outlet

Teak and Cherry Laminated Flooring - new 2000

Upholstery and mattresses replaced throughout - new 2023 (Comfort Afloat)

Saloon table with centre storage, and side leafs

Rear Saloon Vanity unit and mirror

Bilges painted throughout - International bilge paint

New Curtains - 2023

LED array cluster lights in original 'jelly mould' fittings

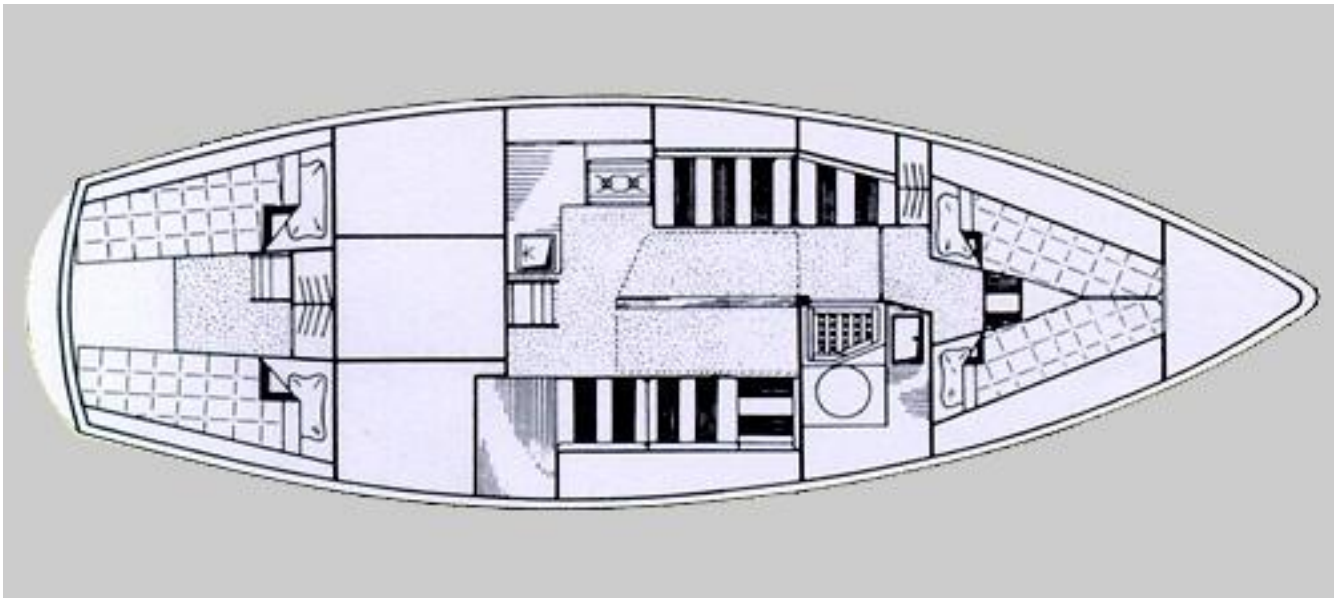
LED spotlight / reading lights fore & aft cabins

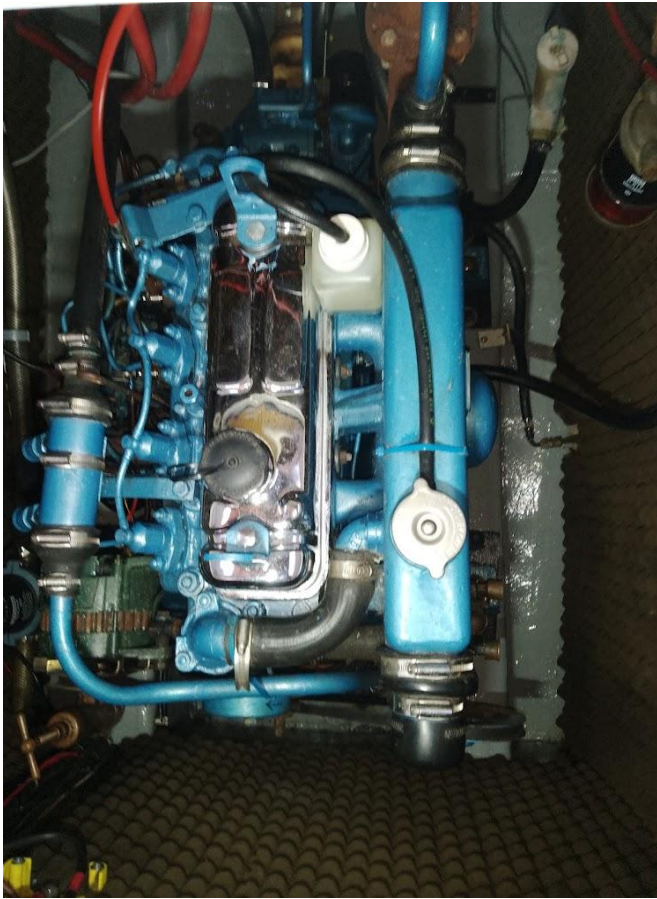
Under berth storage

Chart table with seat

Chart light

2 x Battery distribution switch panels





GALLEY

Stainless steel sink + hot & cold taps
Front opening fridge - Gaz, 12v & 240v
Cutlery & utensil drawers
2 x Utility cupboards
2 burner & oven gimballed Voyager 4500 - new 2022
Hot and Cold pressurised water system

NAVIGATION EQUIPMENT

Raytheon RL9 LCD display - 16 mile radar
Garmin GPS MAP 210 / Chart Plotter
Garmin GPS rail mounted antenna
Navico RT 6500 SH VHF Radio
Raymarine ST4000 wheel autohelm
Raymarine ST4000 control display
Raymarine ST60 Wind
Raymarine ST60 Tri data display
Firdell Radar Reflector
V Tronix Hawk antenna with wind indicator
Masthead Tri Colour with anchor light
Black Ball, Anchor Cone
Forward & aft navigation lights
Masthead tri-colour navigation & anchor lights
Steaming light
Plastimo Offshore 100 Compass - new 2001

ELECTRICAL

Glomex V9125 Omnidirectional TV Antenna
Glomex TV antenna booster
Radio / CD - 2 saloon, plus 2 waterproof cockpit speakers
Votawatch battery level indicator
Triple 12 volt socket outlet
1 x Double, 2 single mains 13a outlet sockets
LED lighting throughout
Tecsup Integral AC Distribution RCD, 3 stage 25A Charger
Ultrasonic Antifouling - (stern gear only)
15m 16a C-Form Artic Flex Mains Cable
2 x 4 Way Battery Isolator Marine Switches
Temperature & Oil - Warning Alarms
LED Deck Light
Upgraded Lucas 75 Amp Alternator



SAFETY EQUIPMENT

- Baltic Lifebouy, Bracket and light set
- 2 X Deck running safety lines
- 2 X cockpit harness eyes
- 2 X Fire extinguishers - new 2024
- 1 X Fire Blanket
- Flare Distress Pack - (out of date)
- Emergency tiller
- CO2 Carbon Monoxide Alarm



Aft cabin berth

SHIPS PAPERS

- Full documentation - user manuals, receipts + pdf's
- Certificate of British Registry
- Lloyds register of shipping plaque

MACHINERY & PROPULSION

Thornycroft T90 35hp - fully overhauled 2008
TMP Hydraulic Gearbox
Eberspacher D2 Airtronic heating - 5 outlets
4 x Hanook 12 volt sealed 110 Ah Batteries
Volvat battery level indicator
Plastimo 4 position master battery switch
CEL/SW2 4 position Battery switch with monitoring
230v Shore Power Mains outlets
Tecsup Integral AC Distribution RCD, 3 stage 25A Charger
2 Blade folding propeller
Ambassador shaft rope stripper - serviced 2024
Ultrasonic Antifouling - (stern gear only)
Whale Gusher manual Bilge Pump
Whale Gulper 220 Bilge Pump
Bilge pump automatic float switch
Galvanic isolator
3 x Truedesign composite stopcocks
New propeller shaft - new 2014
2 x New R&D prop shaft flexible couplings - new 2014
Main Nymph gas water heater
Blakes Lavac toilet
Whale Henderson MK5 (Toilet) - new diaphragm 2024
Heads sink with hot & cold taps







Bilge Access



Bilge



Heads

Contact

Email: moodywaters@btopenworld.com

Phone: 07836 618438