

Moody 33 MkII, 1980, Fin Keel, Centre Cockpit - Moody Waters - £25,000 (tax paid)

Essential reading for all cruising sailors

# SAILING

August 2001 £3.00

## TODAY

**2-3.5HP OUTBOARD ENGINES**  
**10 tested & rated**  
We tell you which is best

**28 PAGES OF TESTS & REVIEWS!**

**FIRST TIME ACROSS**  
**THE SOLENT**  
Good advice for first-time skippers

Wiring checks  
Keep your battery ship shape

**FITTING A VHF**  
Tips for an easy DIY installation

**30-35FT CRUISERS**

# BUYING USED

**Moody 33 tested plus five alternatives: Warrior 35, Maxi 95, Scanmar 35, Westerly 33 & Renown**

**GULL'S EYE: PORTSMOUTH PART 1**  
EXCLUSIVE PULL-OUT GUIDE INSIDE

madmagazines.com 9 771367 586032 AUGUST 2001 £3.00

( As featured on the front page of Sailing Today - Aug 2001 )

Location: Southsea Marina

Year: 1980

Length: 33ft / 10.06m

Keel: Fin Keel

Water: 160L

Fuel: 182L

Propulsion: Shaft driven with 2 blade folding propeller

Built by: Marine Projects (Plymouth) Limited

Rig: Sloop

Draft: 4.5ft / 1.35m

Beam: 11' 5ft / 3.48m

Engine: BMC Thornycroft T90 35hp

Gearbox: TMP Hydraulic





## GENERAL

- 5 coats of Hempel Gel Protect GFE 200 plus primer - 2014
- Tecsew Navy sprayhood and cockpit tent
- 2 x Lewmar 40 self tailing winches
- 4 x 110 Ah batteries plus 2 x battery switches
- All standing rigging replaced with new 8mm 1 x 19 stainless steel
- All rigging replaced with Sta-Lok and Navtec Norseman swageless terminals
- Eberspacher D2 Airtronic heating - 5 outlets
- Gates with pelican hooks and stainless steel stanchions
- Forward hatch replaced with Lewmar 60 Low Profile Hatch
- Forward Hatch cover
- Lucas main sail
- Rotostay II Furling Genoa - new forestay
- Lucas Cruising Chute with snuffer
- Storm Jib
- Proctor mast - Roller reefing
- I.Y.E. Telescopic Spinnaker Pole
- Sail cover (navy
- Upholstery and mattresses replaced - new 2023 (Comfort Afloat)
- Assorted Spares - Starter Motor, Pumps, Engine Spares & Boat Trim







## DECK EQUIPMENT

- Full Canvas Winter Cover
- Simpson-Lawrence Hyspeed Anchor Windlass
- Whitlock Steering Binicle
- Plastimo Offshore 100 Compass
- Tecsew Sprayhood & cockpit tent
- Lucas spray dodgers
- 1 X CQR plough anchor
- 50m Calibrated Galvanized Anchor Chain
- Stemhead bow roller
- Index Marine DR1 deck gland
- Weaver Snap Davits
- Telescopic Boat Hook
- Stainless Steel folding stern boarding ladder
- 2 X Lewmar 40 self tailing Genoa sheet winches
- 1 X Gibb 28RA furling winch
- 2 X Lewmar 7 mast halyard winches
- LED deck / steaming light - LED
- Outboard motor rail mount bracket
- 8 X Fenders
- Large assortment of mooring lines
- Gates with pelican hooks and stainless steel stanchions
- All mast wiring completely renewed, to termination box below
- All windows overhauled with new exterior screw seal
- Full cockpit foam / vinyl fitted cushions - navy
- Rigging screw and shroud cover protectors
- Mast spreader sail protection boots





## INTERIOR & ACCOMODATION

7 Berth

Forward Cabin V berth with removable in-fill- 2 berth - 1 heating outlet

Saloon - 1 double - 1 single berth - 2 heating outlet

Aft Cabin - 2 single berth - 1 heating outlet

Teak and Cherry Laminated Flooring

Upholstery and mattresses replaced throughout - new 2023 (Comfort Afloat)

Saloon table with centre storage, and side leafs

Rear Saloon Vanity unit and mirror

Bilges painted throughout - International bilge paint

New Curtains

LED array cluster lights in original 'jelly mould' fittings

LED spotlight / reading lights fore & aft cabins

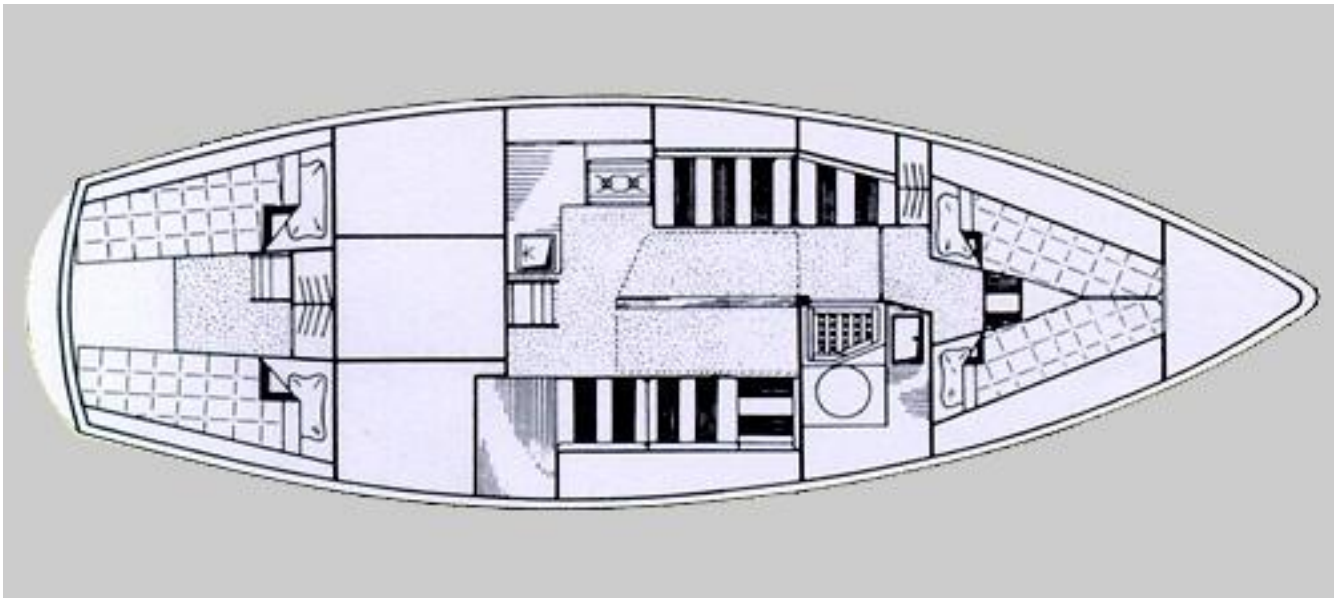
Under berth storage

Chart table with seat

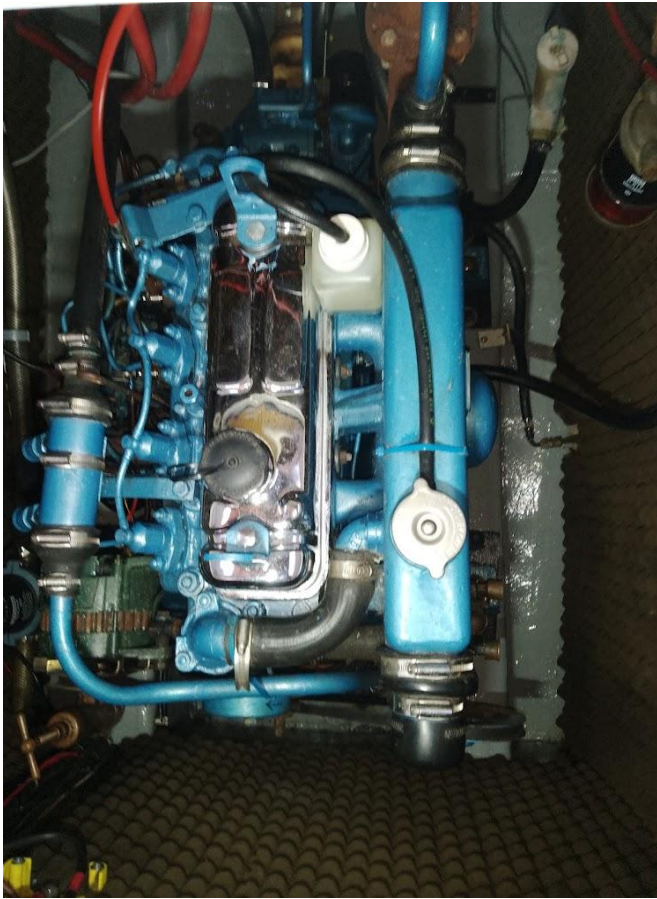
Chart light

2 x Battery distribution switch panels









## GALLEY

Stainless steel sink + hot & cold taps  
Front opening fridge - Gaz, 12v & 240v  
Cutlery & utensil drawers  
2 x Utility cupboards  
2 burner & oven gimballed Voyager 4500 - new 2022  
Hot and Cold pressurised water system

## NAVIGATION EQUIPMENT

Raytheon RL9 LCD display - 16 mile radar  
Garmin GPS MAP 210 / Chart Plotter  
Garmin GPS rail mounted antenna  
Navico RT 6500 SH VHF Radio  
Raymarine ST4000 wheel autohelm  
Raymarine ST4000 control display  
Raymarine ST60 Wind  
Raymarine ST60 Tri data display  
Firdell Radar Reflector  
V Tronix Hawk antenna with wind indicator  
Masthead Tri Colour with anchor light  
Black Ball, Anchor Cone  
Forward & aft navigation lights  
Masthead tri-colour navigation & anchor lights  
Steaming light  
Plastimo Offshore 100 Compass

## ELECTRICAL

Glomex V9125 Omnidirectional TV Antenna  
Glomex TV antenna booster  
Radio / CD - 2 saloon, plus 2 waterproof cockpit speakers  
Votawatch battery level indicator  
Triple 12 volt socket outlet  
1 x Double, 2 single mains 13a outlet sockets  
LED lighting throughout  
Tecsup Integral AC Distribution RCD, 3 stage 25A Charger  
Ultrasonic Antifouling - (stern gear only)  
15m 16a C-Form Artic Flex Mains Cable  
2 x 4 Way Battery Isolator Marine Switches  
Temperature & Oil - Warning Alarms  
LED Deck Light  
Upgraded Lucas 75 Amp Alternator







## SAFETY EQUIPMENT

- Baltic Lifebouy, Bracket and light set
- 2 X Deck running safety lines
- 2 X cockpit harness eyes
- 2 X Fire extinguishers - new 2024
- 1 X Fire Blanket
- Flare Distress Pack - (out of date)
- Emergency tiller
- CO2 Carbon Monoxide Alarm



Aft cabin berth

## SHIPS PAPERS

- Full documentation - user manuals, receipts
- Acrobat Reader / .pdf extensive manual & instruction library
- Certificate of British Registry
- Lloyds register of shipping plaque

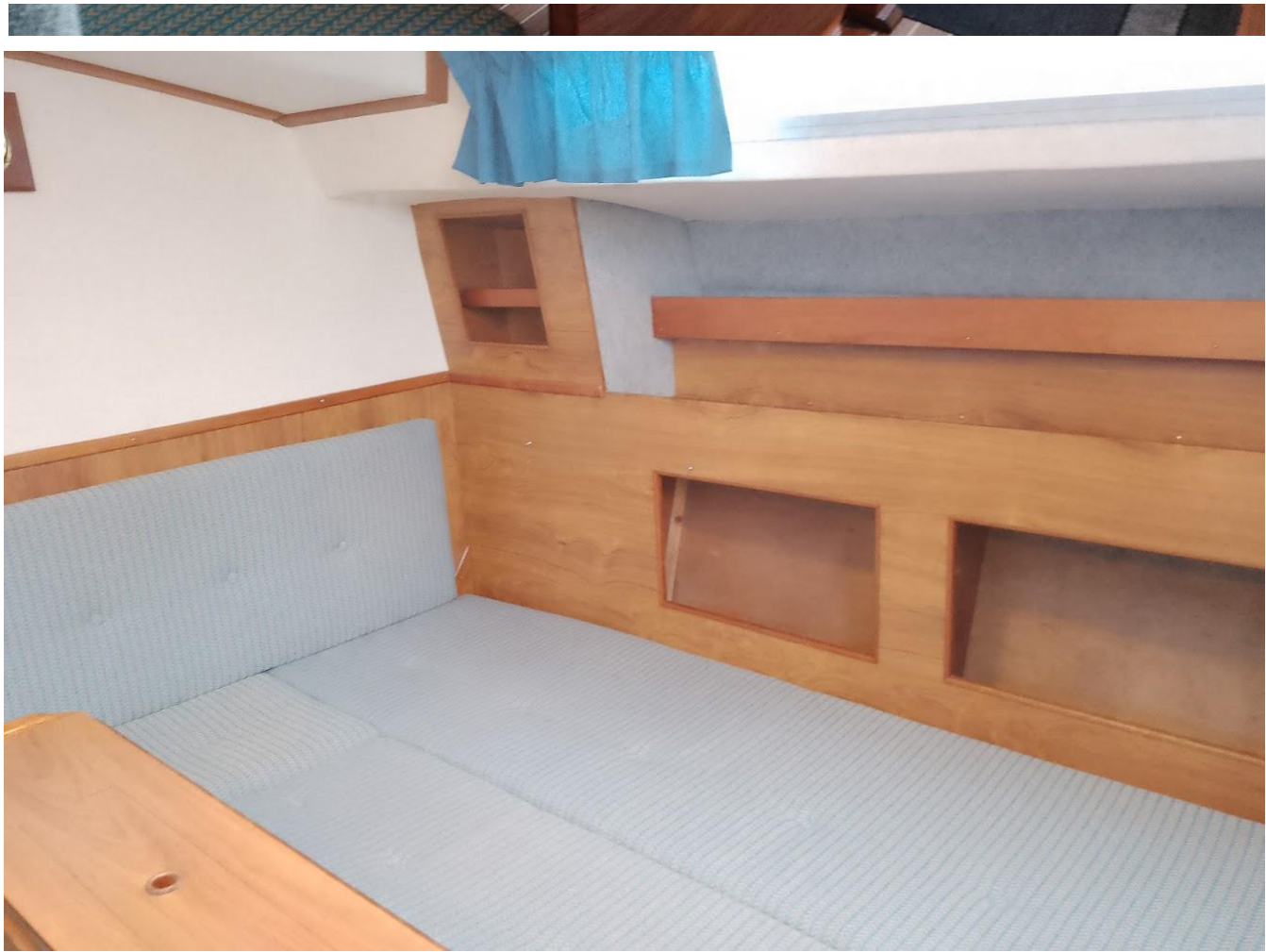


## MACHINERY & PROPULSION

Thornycroft T90 35hp - fully overhauled 2008  
TMP Hydraulic Gearbox  
Eberspacher D2 Airtronic heating - 5 outlets  
4 x Hanook 12 volt sealed 110 Ah Batteries  
Volvat battery level indicator  
Plastimo 4 position master battery switch  
CEL/SW2 4 position Battery switch with monitoring  
230v Shore Power Mains outlets  
Tecsup Integral AC Distribution RCD, 3 stage 25A Charger  
2 Blade folding propeller  
Ambassador shaft rope stripper - serviced 2024  
Ultrasonic Antifouling - (stern gear only)  
Whale Gusher manual Bilge Pump  
Whale Gulper 220 Bilge Pump  
Bilge pump automatic float switch  
Galvanic isolator  
3 x Trudesign composite stopcocks  
New propeller shaft - new 2014  
2 x New R&D prop shaft flexible couplings - new 2014  
Main Nymph gas water heater  
Blakes Lavac toilet  
Whale Henderson MK5 ( Toilet ) - new diaphragm 2024  
Heads sink with hot & cold taps











Bilge Access



Bilge





Heads





Steering Binacle





Aft Cabin



Instrument Panel





**Contact**

**Email: [moodywaters@btopenworld.com](mailto:moodywaters@btopenworld.com)**

**Phone: 07836 618438**